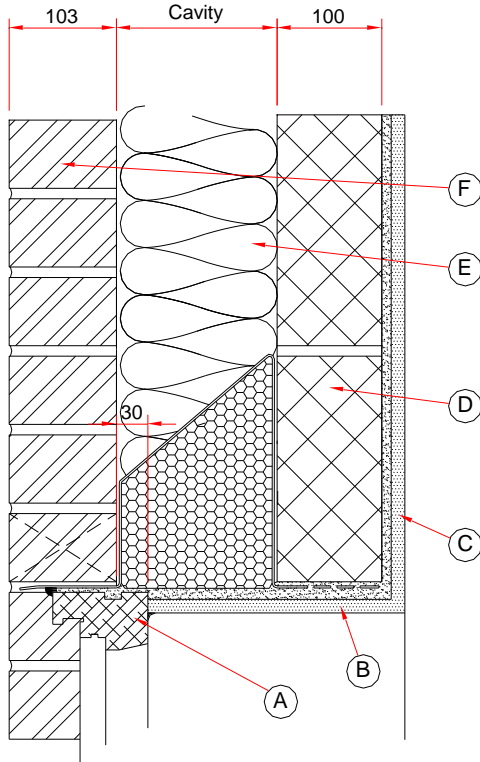


Catnic Lintel Psi values (10-11-17) Combined Lintel Full Fill Cavity Wall Construction



Materials	Thickness (mm)	λ Value (W/m.K)	
(A) Window frame	~	~	
(B) Plasterboard + Adhesive	12.5 10.0	0.19 0.09	
(C) Plasterboard on Dabs + Air Space	12.5 10.0	0.19 0.09	
(D) Blockwork	100	0.11	
(E) Insulation	See Table	0.037	
(F) Brick	103	0.077	
Lintel	Steel Insulation	~ ~	52 0.038
Comment:	Continuous band of adhesive to soffit area		

Cavity (mm)	Lintel	Psi value (W/m.K)
100	CG90/100	0.172
	CH90/100	0.351
	CX90/100	0.343
	CXL290*	0.483
	CBP100/100*	0.497
125	CG110/100	0.165
	CH110/100	0.347
	CX110/100	0.348
	CXL310*	0.538
	CBP110/100*	0.482
150	CG150/100	0.175
	CH150/100	0.366
	CX150/100	0.396
	CXL350*	0.560
	CBP150/100*	0.493

*Cavity insulation must be continued down to lintel base plate

CG lintel psi values quoted take into account any additional heat loss that occurs through the discrete brackets within the lintel. CG Lintel psi values based on 1500 mm long lintel design

To limit the risk of surface condensation or mould growth the temperature factor for a detail used in the external wall of a dwelling must be greater than 0.75. Used in the above details, the Catnic CG, CH, CX and CXL lintels all have temperatures factors greater than 0.75.

All calculations have been carried out following the conventions set out in BR 497.

Catnic

Pontypandy Industrial Estate Caerphilly CF83 3GL United Kingdom
T +44 (0)29 2033 7900 F +44 (0)29 2088 2820 www.catnic.com

Tata Steel UK Limited Registered in England 2280000. Registered Office: Tata Steel 30 Millbank London SW1P 4WY