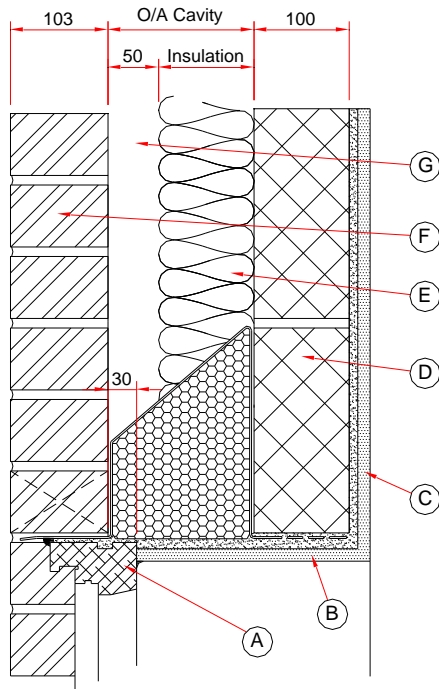


## Catnic Lintel Psi values (10-11-17) Combined Lintel Partial Fill Cavity Wall Construction



Materials	Thickness (mm)	$\lambda$ Value (W/m.K)
(A) Window frame	-	-
(B) Plasterboard + Adhesive	12.5 + 10.0	0.19 + 0.09
(C) Plasterboard on Dabs + Air Space	12.5 + 10.0	0.19 + 0.09
(D) Blockwork	100	0.11
(E) Insulation	See Table	0.022
(F) Brick	103	0.077
(G) Residual Cavity	50	0.278
Lintel	Steel + Insulation	52 + 0.038

Comment: Continuous band of adhesive to soffit area

Overall Cavity (mm)	Insulation Thickness (mm)	Lintel	Psi value (W/m.K)
100	50	CG90/100	0.181
		CH90/100	0.374
		CX90/100	0.356
		CXL290*	0.499
		CBP100/100*	0.505
125	75	CG110/100	0.181
		CH110/100	0.364
		CX110/100	0.370
		CXL310*	0.551
		CBP110/100*	0.503
150	100	CG150/100	0.193
		CH150/100	0.383
		CX150/100	0.416
		CXL350*	0.581
		CBP150/100*	0.513

\*Cavity insulation must be continued down to lintel base plate

CG lintel psi values quoted take into account any additional heat loss that occurs through the discrete brackets within the lintel. CG Lintel psi values based on 1500 mm long lintel design.

To limit the risk of surface condensation or mould growth the temperature factor for a detail used in the external wall of a dwelling must be greater than 0.75. Used in the above details, the Catnic CG, CH, CX and CXL lintels all have temperatures factors greater than 0.75.

All calculations have been carried out following the conventions set out in BR 497.

### Catnic

Pontypandy Industrial Estate Caerphilly CF83 3GL United Kingdom  
T +44 (0)29 2033 7900 F +44 (0)29 2088 2820 [www.catnic.com](http://www.catnic.com)

Tata Steel UK Limited Registered in England 2280000. Registered Office: Tata Steel 30 Millbank London SW1P 4WY