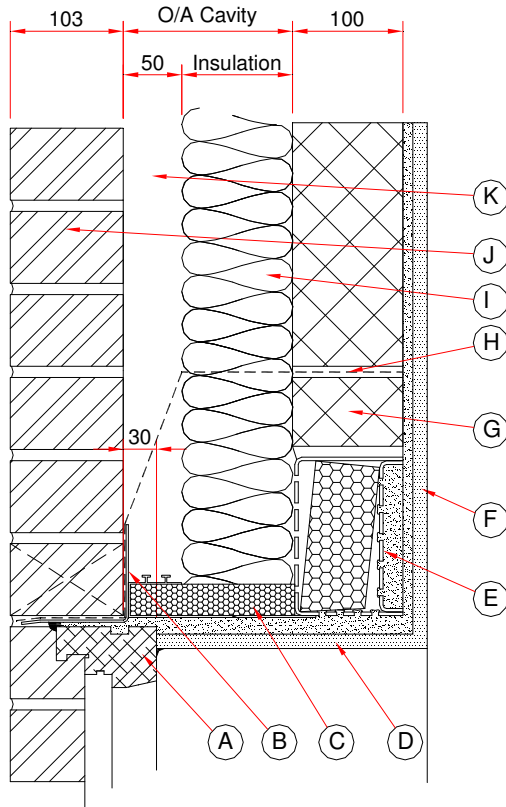


Catnic Lintel Psi values (5-2-15) Separate Lintels Partial Fill cavity Wall Construction



	Materials	Thickness (mm)	λ Value (W/m.K)
(A)	Window frame	~	~
(B)	Catnic ANG Lintel		
(C)	Insulated PVC-U Cavity Closer		
(D)	Plasterboard + Adhesive	12.5 10.0	0.19 0.09
(E)	Catnic Insulated Box Lintel		
(F)	Plasterboard on Dabs + Air Space	12.5 10.0	0.19 0.09
(G)	Blockwork	100	0.11
(H)	DPC Tray	0.8	0.24
(I)	Insulation	See Table	0.037
(J)	Brick	103	0.077
(K)	Residual Cavity	50	0.278
	Lintel	Steel Insulation	~ ~ 52 0.038
Comment:		Continuous band of adhesive to soffit area	

Overall Cavity (mm)	Psi value (W/m.K)
100	0.017
125	0.021
150	0.029

To limit the risk of surface condensation or mould growth the temperature factor for a detail used in the external wall of a dwelling must be greater than 0.75. The above details all have temperatures factors greater than 0.9.

All calculations have been carried out following the conventions set out in BR 497.

Catnic

Pontypandy Industrial Estate Caerphilly CF83 3GL United Kingdom
T +44 (0)29 2033 7900 F +44 (0)29 2088 2820 www.catnic.com

Tata Steel UK Limited Registered in England 2280000. Registered Office: Tata Steel 30 Millbank London SW1P 4WY