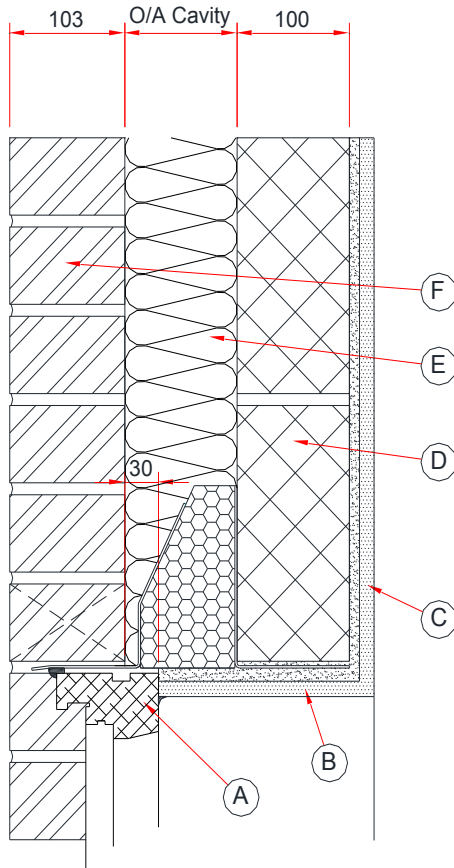


Catnic Thermally Broken Lintel Psi values (1-6-16) Full Fill Cavity Wall Construction



	Materials	Thickness (mm)	λ Value (W/m.K)
(A)	Window frame	~	~
(B)	Plasterboard + Adhesive	12.5 10.0	0.19 0.09
(C)	Plasterboard on Dabs + Air Space	12.5 10.0	0.19 0.09
(D)	Blockwork	100	0.11
(E)	Insulation		0.037
(F)	Brick	103	0.077
Lintel	Steel	~	52
	Insulation	~	0.034
Comment:		Continuous band of adhesive to soffit area	

Cavity (mm)	Lintel		Psi value (W/m.K)
	Code	Type	
100	TS90/100	Standard Duty	0.043
	TX90/100	Extra Heavy Duty	0.048
150	TS150/100	Standard Duty	0.029
	TX150/100	Extra Heavy Duty	0.030

To limit the risk of surface condensation or mould growth the temperature factor for a detail used in the external wall of a dwelling must be greater than 0.75. Used in the above details, the Catnic Thermally Broken Lintels all have temperatures factors greater than 0.92.

Calculation have been produced independently by the Building Research Establishment (BRE) following the conventions set out in BR 497. A full copy of the report and Certification can be found at: -

<http://www.bre.co.uk/certifiedthermalproducts/display.jsp?id=3590&st=2&sst=0&pt=3&jt=10>