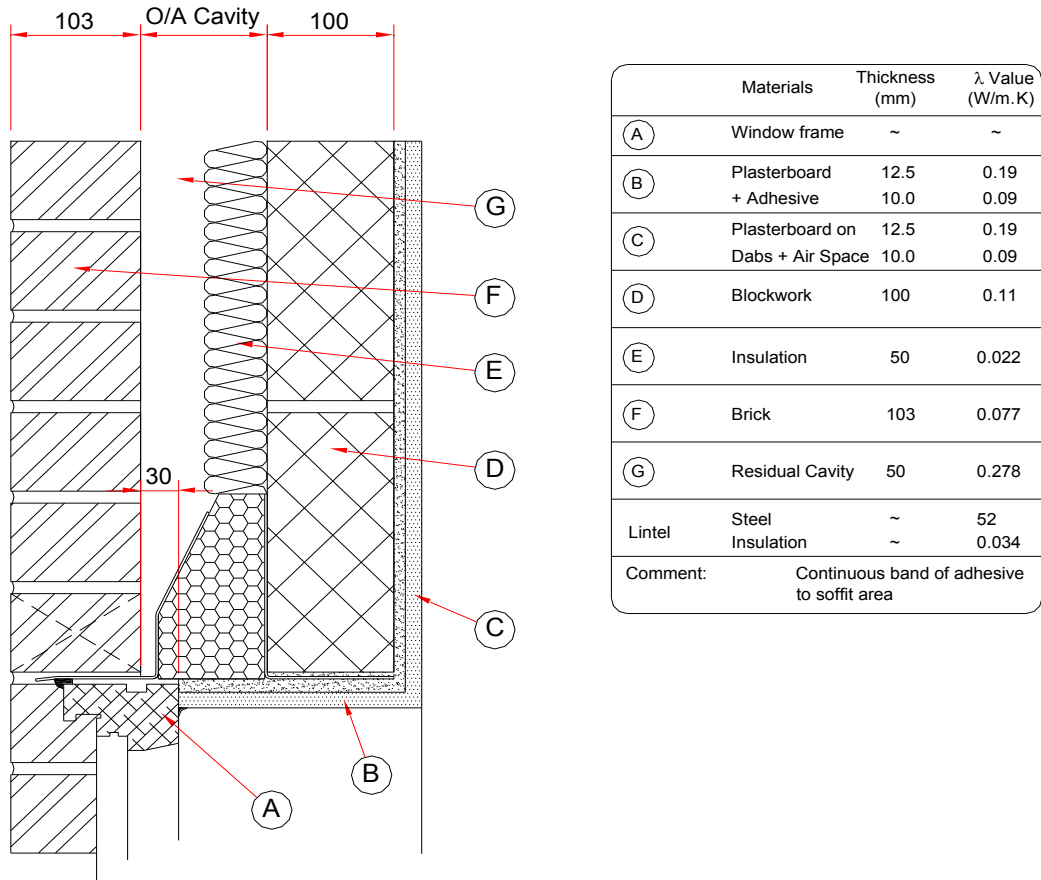


Catnic Thermally Broken Lintel Psi values (1-6-16) Partial Fill Cavity Wall Construction



Cavity (mm)	Lintel		Psi value (W/m.K)
	Code	Type	
100	TS90/100	Standard Duty	0.042
	TX90/100	Extra Heavy Duty	0.050
150	TS150/100	Standard Duty	0.033
	TX150/100	Extra Heavy Duty	0.037

To limit the risk of surface condensation or mould growth the temperature factor for a detail used in the external wall of a dwelling must be greater than 0.75. Used in the above details, the Catnic Thermally Broken Lintels all have temperatures factors greater than 0.92.

Calculation have been produced independently by the Building Research Establishment (BRE) following the conventions set out in BR 497. A full copy of the report and Certification can be found at: -

<http://www.bre.co.uk/certifiedthermalproducts/display.jsp?id=3590&st=2&sst=0&pt=3&jt=10>